

FlexHead[®] Commercial Fire Sprinkler Connections

FlexHead Sidewall Model for Soffets

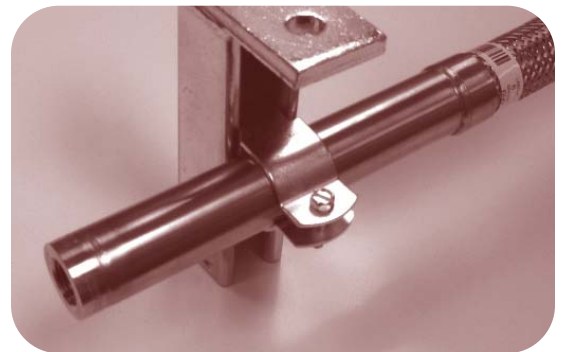
Materials

- FlexHead sprinkler hose with fittings:
304 stainless steel
- Tolco-BR-22 Bracket with pipe clamp
(not included)

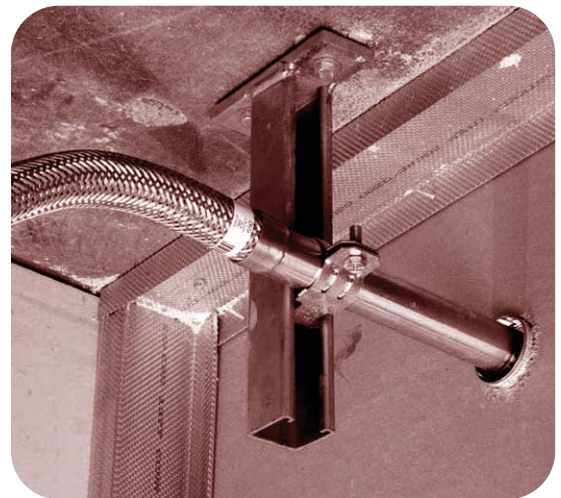
Description

The FlexHead Sidewall Model for Soffets uses unistrut to secure the FlexHead sprinkler hose to the building structure. This model is perfect for hotel applications when you have a soffit in a room where a sidewall sprinkler head needs to be installed. This configuration allows the installer to attach the unistrut in the general location of the sprinkler head and adjust it later once the final fit-up is ready to be completed.

The flexible hose can be adjusted up and down along the length the length of the unistrut and within the pipe clamp to get perfect head placement without any reconfiguration of sprinkler piping. These models are designed for use in commercial Sheetrock ceilings having a soffit within the ceiling where sprinkler coverage is required.



FlexHead Sidewall Model for Soffets



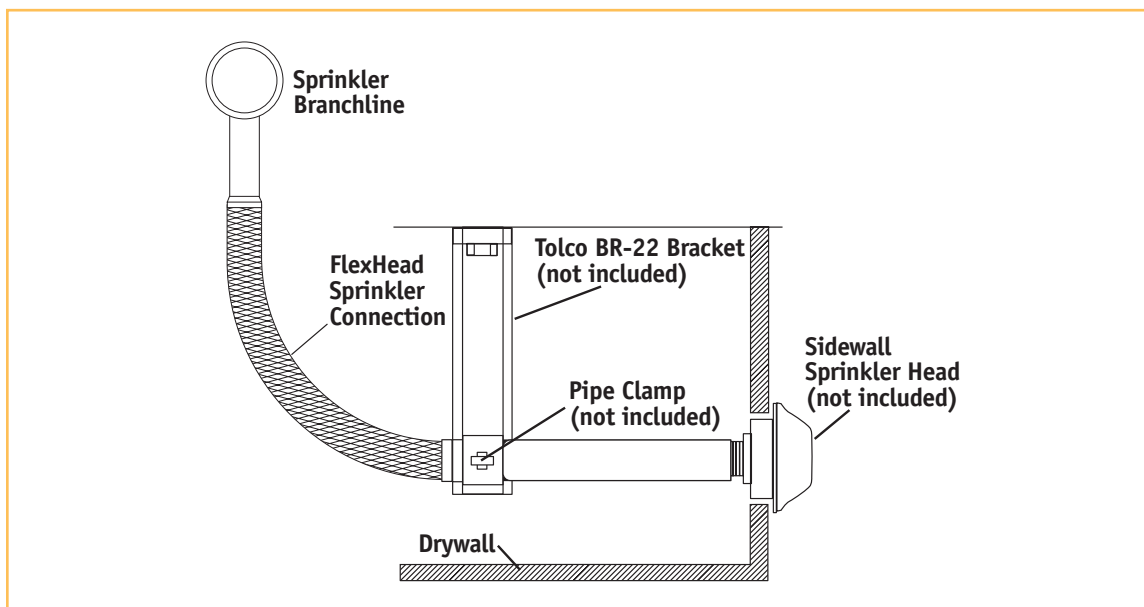
Installed FlexHead Sidewall Model for Soffets



Friction Loss Data and Specifications

F R I C T I O N L O S S	FlexHead Model #	Outlet Size in (cm)	Hose Assembly Length ft(m)	Equivalent Length Length of Schedule 40, Nominal 1 in. Diameter Pipe, ft(m)	Maximum Ambient Temperature Rating F(C)	Maximum Rated Pressure psi (kPa)
	2024I	1/2(1.27)	2(0.6)	3.5(1.1)	300°(148°)	175(1205)
2036I	1/2(1.27)	3(0.9)	4.8(1.5)	300°(148°)	175(1205)	
2048I	1/2(1.27)	4(1.2)	6.8(2.1)	300°(148°)	175(1205)	
2060I	1/2(1.27)	5(1.5)	8.5(2.6)	300°(148°)	175(1205)	
2072I	1/2(1.27)	6(1.8)	8.9(2.7)	300°(148°)	175(1205)	
2024I 75	3/4(1.90)	2(0.6)	7.8(2.4)	300°(148°)	175(1205)	
2036I 75	3/4(1.90)	3(0.9)	8.1(2.5)	300°(148°)	175(1205)	
2048I 75	3/4(1.90)	4(1.2)	17.9(5.5)	300°(148°)	175(1205)	
2060I 75	3/4(1.90)	5(1.5)	19.9(6.1)	300°(148°)	175(1205)	
2072I 75	3/4(1.90)	6(1.8)	24.3(7.4)	300°(148°)	175(1205)	

* Sidewall application with a Tolco-BR-22 unistrut type hanger. The channel length is limited to 6 and 12 inches.



Let FlexHead make your connection today.

Engineers

- Stainless steel quality at black iron costs
- Fast-track construction
- Simplified project management
- Cost-effective code compliance
- Seismically qualified

Contractors

- Lower installation costs
- More productive installers
- No punch list items
- Highest quality available
- More flexible scheduling
- Competitive advantage for your company

Owners

- Shorter time to occupancy
- Lower reconfiguration costs
- Cost effective code compliance
- Lower total costs of ownership

U.S. and international patents pending: #6,123,154, #6,119,784, #6,752,218, #7,032,680, #6,488,097.

The FlexHead name and logo are trademarks of FlexHead Industries.

FGG/BM and Blazemaster are registered trademarks of Novoen IP Holding Corp.

USGBC and LEED are registered trademarks of the U.S. Green Building Council.

HeadQuarters/Manufacturing

56 Lowland Street, Holliston, MA 01746
toll-free 800-829-6975/(508) 893-9596
fax (508) 893-6020/www.flexhead.com