

FlexHead[®] Commercial Fire Sprinkler Connections

FlexHead Low-Profile Model

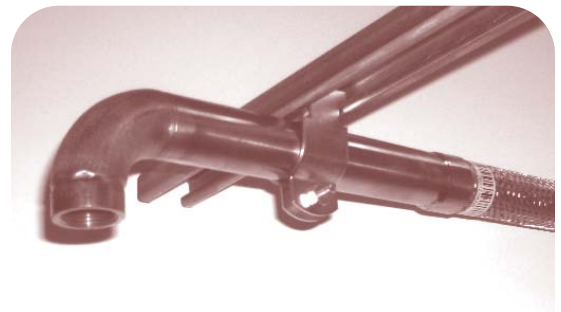
Materials

- FlexHead sprinkler hose with fittings:
304 stainless steel
- Unistrut with pipe clamp (not included)

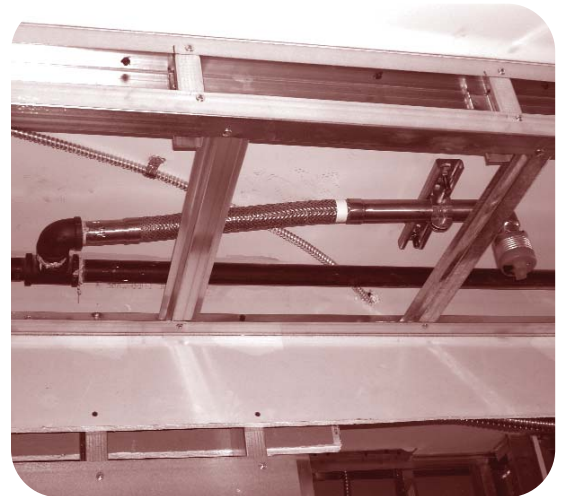
Description

The FlexHead Low-Profile Model uses traditional unistrut to secure the FlexHead sprinkler hose to the building structure. This model is perfect for applications where you have very limited space and a concrete deck above the ceiling that can be used to secure the flexible hose to the building structure. This configuration allows the installer to attach the unistrut in the general location of the sprinkler head and adjust it later once the final fit-up is ready to be completed.

The unistrut is initially attached to the building structure on one side and can be rotated 360 degrees while the flexible hose can be adjusted along the length of the unistrut to get perfect head placement without any reconfiguration of sprinkler piping. These models are designed for use in commercial suspended ceilings and Sheetrock ceilings having very limited space ranging from 2½ inches to 6 inches from the concrete deck of the ceiling.



FlexHead Low-Profile Model



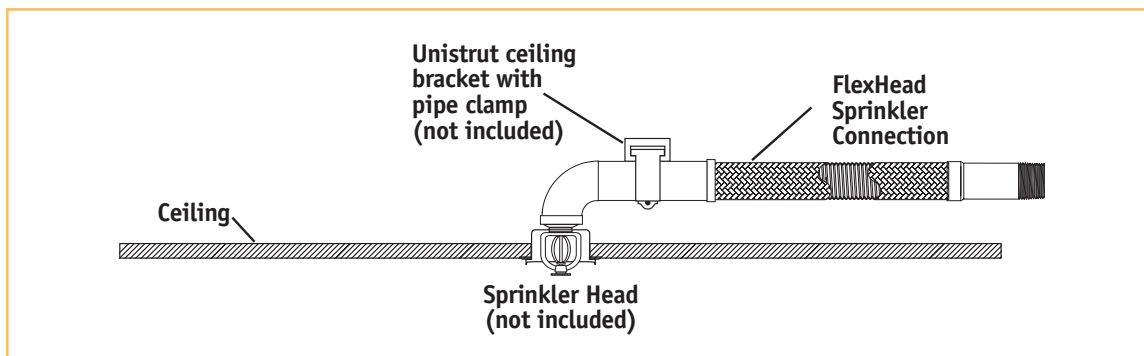
Installed FlexHead Low-Profile Model



Friction Loss Data and Specifications

F R I C T I O N L O S S	FlexHead Model #	Outlet Size (in/cm)	Hose Assembly Length (ft/m)	Equivalent Length Length of Schedule 40, Nominal 1 in. Diameter Pipe, ft(m)	Maximum Ambient Temperature Rating (F/C)	Maximum Rated Pressure
						psi (kPa)
	2024E-LP	1/2(1.27)	2(0.6)	5.5(1.7)	300°(148°)	175(1205)
	2036E-LP	1/2(1.27)	3(0.9)	6.8(2.1)	300°(148°)	175(1205)
	2048E-LP	1/2(1.27)	4(1.2)	8.8(2.7)	300°(148°)	175(1205)
	2060E-LP	1/2(1.27)	5(1.5)	10.5(3.2)	300°(148°)	175(1205)
	2072E-LP	1/2(1.27)	6(1.8)	10.9(3.3)	300°(148°)	175(1205)
	2024E-LP 75	3/4(1.90)	2(0.6)	7.8(2.4)	300°(148°)	175(1205)
	2036E-LP 75	3/4(1.90)	3(0.9)	8.1(2.5)	300°(148°)	175(1205)
	2048E-LP 75	3/4(1.90)	4(1.2)	17.9(5.4)	300°(148°)	175(1205)
	2060E-LP 75	3/4(1.90)	5(1.5)	19.9(6.1)	300°(148°)	175(1205)
	2072E-LP 75	3/4(1.90)	6(1.8)	24.3(7.4)	300°(148°)	175(1205)

* The "E LP" indicates a "low profile" elbow unit welded on the end of the hose. Approval of these models of flexible metal sprinkler hose incorporates a stainless steel elbow welded on the outlet end of the hose and with unistrut channel and pipe clamp is limited to securing these models to the building structure. These models are for use in commercial suspended ceiling (T Bar Grid) and Sheetrock suspended ceiling with very limited room between floors.



Let FlexHead make your connection today.

Engineers

- Stainless steel quality at black iron costs
- Fast-track construction
- Simplified project management
- Cost-effective code compliance
- Seismically qualified

Contractors

- Lower installation costs
- More productive installers
- No punch list items
- Highest quality available
- More flexible scheduling
- Competitive advantage for your company

Owners

- Shorter time to occupancy
- Lower reconfiguration costs
- Cost effective code compliance
- Lower total costs of ownership