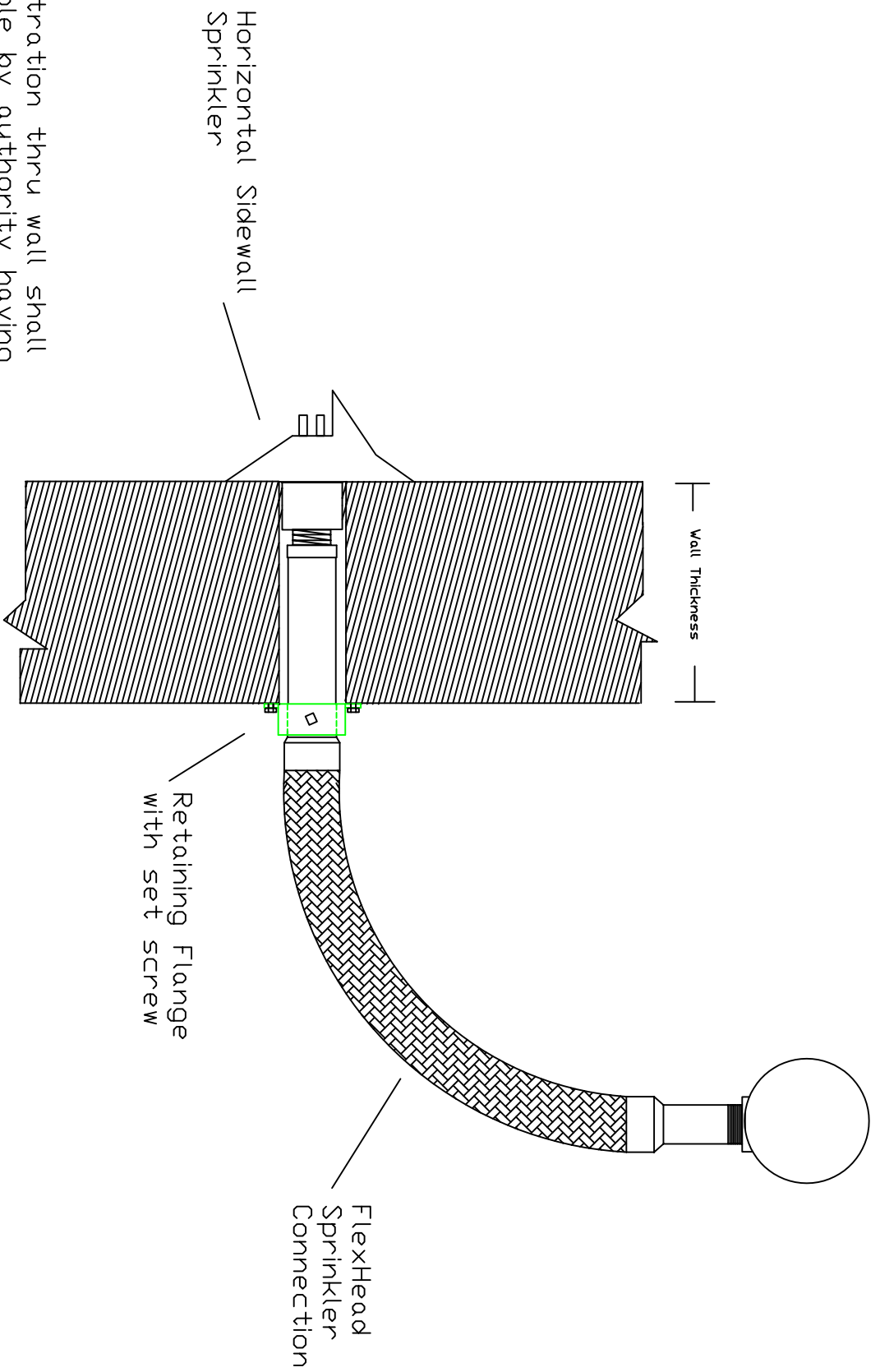


Sprinkler Branchline



Note: Penetration thru wall shall be acceptable by authority having jurisdiction.

REV	DATE	DESCRIPTION

FlexHead Sidewall Institutional Sprinkler Connection
 FlexHead M# 20241, 20361, 20481, 20601, 20721
 Drawn By: TEF
 Date 10/10/03

FLEXHEAD
 INDUSTRIES

Fax: 508-893-6020
 Phone: 508-893-9596

JOB No: SHEET 1 OF 1

This drawing is the property of Flexhead Industries, Inc. and must be returned without reproduction or duplication at any time upon completion of the project. It must be properly safeguarded against disclosure to anyone except those employees who require it for work of job. The recipient must keep confidential and require his (its) employees to keep confidential the information contained herein.