

FlexHead[®] Commercial Fire Sprinkler Connections

FlexHead Drop Nipple Model

Materials

- FlexHead sprinkler hose with fittings:
304 stainless steel
- Unistrut with pipe clamp (not included)
- Drop nipple with reducer (not included)
(also compatible with adjustable drop nipples)

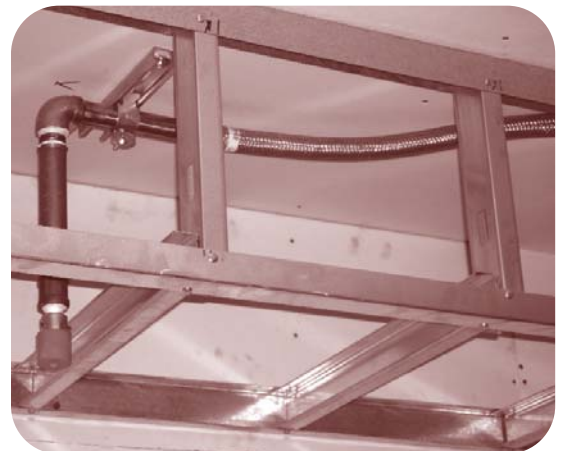
Description

The FlexHead Drop Nipple Model uses traditional unistrut to secure the FlexHead sprinkler hose to the building structure. The flexible hose is attached to a drop nipple with reducer during final fit-up and is also compatible with adjustable drop nipples. This model is perfect for applications where you have a concrete deck above the ceiling that can be used to secure the flexible hose to the building structure. This configuration allows the installer to attach the unistrut in the general location of the sprinkler head during the rough installation.

The unistrut is initially attached to the building structure on one side and can be rotated 360 degrees while the flexible hose can be adjusted along the length of the unistrut to get perfect sprinkler head placement without any reconfiguration of sprinkler piping. These models are designed for use in commercial suspended ceilings and Sheetrock ceilings.



FlexHead Drop Nipple Model without drop nipple



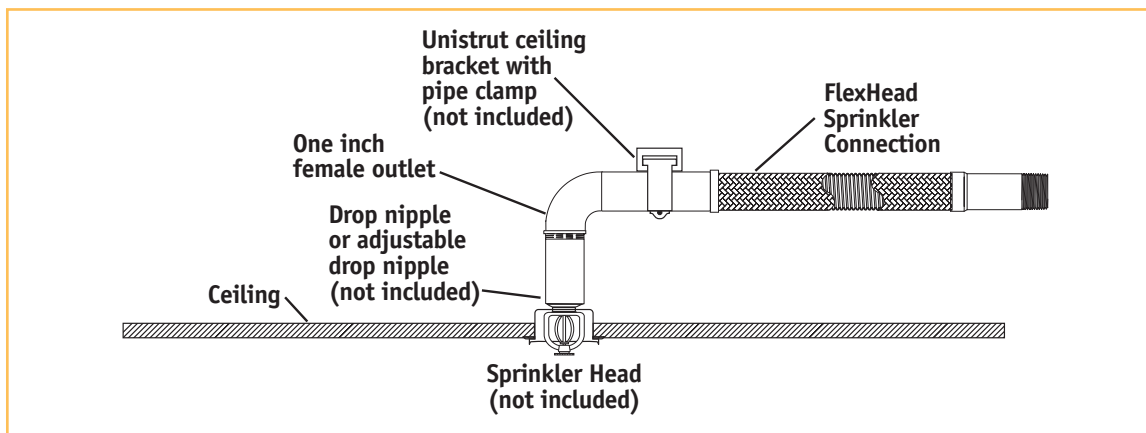
Installed FlexHead Drop Nipple Model



Friction Loss Data and Specifications

FRICTION LOSS	FlexHead Model #	Outlet Size in (cm)	Hose Assembly Length ft(m)	Equivalent Length Length of Schedule 40, Nominal 1 in. Diameter Pipe, ft(m)	Maximum Ambient Temperature Rating F(C)	Maximum Rated Pressure
						psi (kPa)
	2024-IE-G	1(2.54)	2(0.6)	5.5(1.7)	300°(148°)	175(1205)
	2036-IE-G	1(2.54)	3(0.9)	6.8(2.1)	300°(148°)	175(1205)
	2048-IE-G	1(2.54)	4(1.2)	8.8(2.7)	300°(148°)	175(1205)
	2060-IE-G	1(2.54)	5(1.5)	10.5(3.2)	300°(148°)	175(1205)
	2072-IE-G	1(2.54)	6(1.8)	10.9(3.3)	300°(148°)	175(1205)

* The "IE-G" indicates a "low profile" elbow unit welded on the end of the hose. This model will have a 1 inch female outlet. Approval of these models of flexible metal sprinkler hose incorporates a stainless steel elbow welded on the outlet end of the hose and with unistrut channel and pipe clamp is limited to securing these models to the building structure. These models are for use in commercial suspended ceilings (T Bar Grid) and Sheetrock suspended ceilings.



Let FlexHead make your connection today.

Engineers

- Stainless steel quality at black iron costs
- Fast-track construction
- Simplified project management
- Cost-effective code compliance
- Seismically qualified

Contractors

- Lower installation costs
- More productive installers
- No punch list items
- Highest quality available
- More flexible scheduling
- Competitive advantage for your company

Owners

- Shorter time to occupancy
- Lower reconfiguration costs
- Cost effective code compliance
- Lower total costs of ownership

HeadQuarters/Manufacturing

56 Lowland Street, Holliston, MA 01746
toll-free 800-829-6975/(508) 893-9596
fax (508) 893-6020/www.flexhead.com

U.S. and international patents pending:
#6,123,154, #6,119,784, #6,752,218,
#7,032,680, #6,488,097.

The FlexHead name and logo are trademarks of FlexHead Industries.

FGG/BM and Blazemaster are registered trademarks of Noveen IP Holding Corp.

USGBC and LEED are registered trademarks of the U.S. Green Building Council.